



XIN ANENG CONVEYING MACHINERY CO., LTD.

湖北省鑫安能运机设备有限公司

Xin Aneng Conveying Machinery Co., Ltd.

Mobile: +8618561668850

Tel: 86-532-88110938

Email: info@x-conveying.com

web: www.x-conveying.com

Add: Chuangye Road 7, E Zhou City, Hubei

Product Lists

Xin Aneng Conveying Machinery Co., Ltd. specializes in producing belt conveyor idlers, conveyor rollers, conveyor pulleys, conveyor frames, conveyor cleaners, related conveyor accessories,

Various conveyor machines, such as fixed conveyors, mobile lifting conveyors, environmental protection conveyors, etc.

Due to the rich experience in continuously improving manufacturing and technology, the products have been sold to over 30 countries and regions, including The Middle East, Africa, Australia, Europe, Southeast Asia, Russia, and other countries and regions. These are widely used in mining, colliery, power, harbor, cement, etc.

The standardized and automatic manufacturing technology ensures the conformity and reliability of the products, thus avoiding the risks of product discrepancy.

Our Excellent technology and service teams offer an excellent guarantee of product quality.

Our products comply with different international standards, such as DIN, CEMA, Australian AS standard, Japanese etc.



- 1 Conveyor Idler
- 2 Conveyor Pulley
- 3 Conveyor Frame
- 4 Conveyor Belt Cleaner
- 5 Conveyor Machine
- 6 Conveyor Belting
- 7 Mining Rubber Sheet



一 Conveyor Idlers

Carrying Idler

承载托辊



Carrying idlers are used to support the conveyor belt and are installed on the groove-shape frame, groove-shape forward inclined idler frames and transition idler frames.

Impact Idler

缓冲托辊



Installed on the material-feeding spot to absorb the shock of falling down material and protect the belt and idlers from damage.

Idler with Rubber Disc

梳型托辊



There are anti-tearing, high elasticity and anti-burning rubber disc on the face of this kind of idlers that can remove the pellet or powder materials stick to the belt. Thus avoid the belt moving deviation.

Rubber Coating Idler

包胶托辊



Rubber is vulcanized directly to the pipe. This kind of idler enjoys anti-tearing, anti-pounding and high elasticity function.

Taper Shape Idler

锥形托辊



Cooperating with the revolving frame adjust the belt deviation. Installed on the carrying and returning belt, this kind of idler can prevent the belt from moving deviation.

Rubber Screw Idler

橡胶螺旋托辊



There are several strong anti-tearing rubber rings on the face of this kind of idlers that can prevent dust from entering into the returning stage of the belt. They can also prevent the materials from sticking to the surface of the returning idlers. They also enjoy function of deviation adjusting.

Steel Screw Idler

钢螺旋托辊



Enjoying cleaning function and can prevent the materials from sticking to the belt. Thus avoid the belt moving deviation.

HDPE Idler

塑料托辊



Using modified high density polyethylene pipe as the idler pipe, HDPE idler enjoys the benefits of light weight, high wearability and long life.

二 Conveyor Pulley

Head/drive Pulley

传动滚筒



Light duty:
Bearing Aperture:
80~100mm.
The axle and the hub are connected by the single key. And it's single plate welding. The axle is unidirectional out.

■Medium duty:
Bearing Aperture:
120~180mm.

The axle and the hub are connected by the ring lock.

■Heavy duty:
Bearing Aperture:
200~220mm.

Ceramic Rubber Pulley

陶瓷包胶滚筒



The high wearability of the ceramic used in the pulleys can increase friction coefficient between the pulley and belt and effectively protect the belt from slipping. It can reduce the belt tension and prolong the belt life. The wearability of the ceramic can increase the pulley's service life ten times more. It can be used for high wear and wet material conveying or used in high humidity surrounding that can cause belt slipping.

Tail Bend Pulley

尾部改向托辊



The tail(bend) pulley is used for changing the direction of the belt running or increasing the wrap angle between the conveyor belt and the driving pulley. As per different carrying capacities, the tail(bend) pulley can be divided into three categories: light duty, medium duty and heavy duty. The shift of bearing aperture can be 50~100 mm, 120~180 mm and 200~260 mm. And the structure is the same with the driving pulley.



三 Conveyor Bracket

支架

Idler Frame



Impact Bed



The Impact beds are used at the loading or transfer points to absorb the impact force of material falling and prevent the damage to the belt. Impact beds are generally fitted in place of impact idlers, thus eliminating damage to bearings and other moving parts.



四 Conveyor Cleaner

清扫器

Installed on the face of the head pulley below the discharging point and are used to clean the residual material on the belt working surface. There are tungsten carbide blade and polyurethane blade available.



五 Conveyor Machine 输送机



六 Conveyor Belting

EP/NN Conveyor Belting

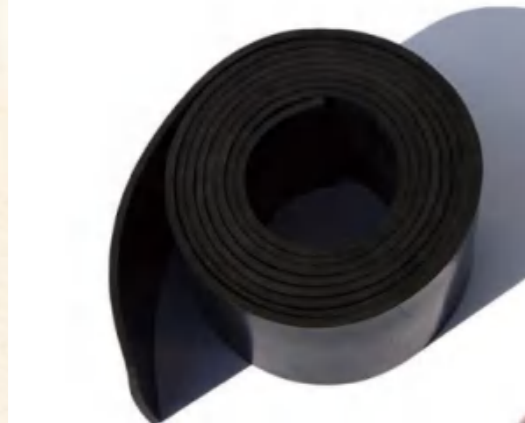


Steel Cord Conveyor Belting



Mining Rubber Sheet

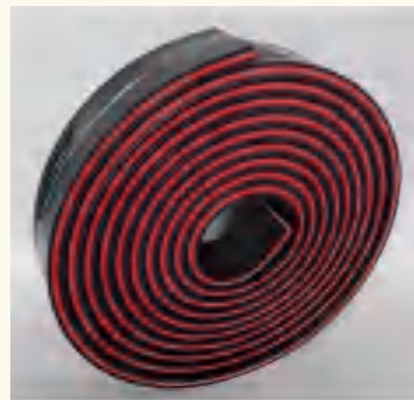
Skirting Rubber Sheet



Diamond Pulley Lagging



Sandwich Rubber Sheet



Capping Rubber



Conveyor Parts



Bend Pulley



Transmission Pulley



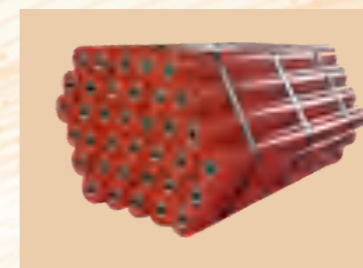
Drum Pulley



Idler Group



Idler Group

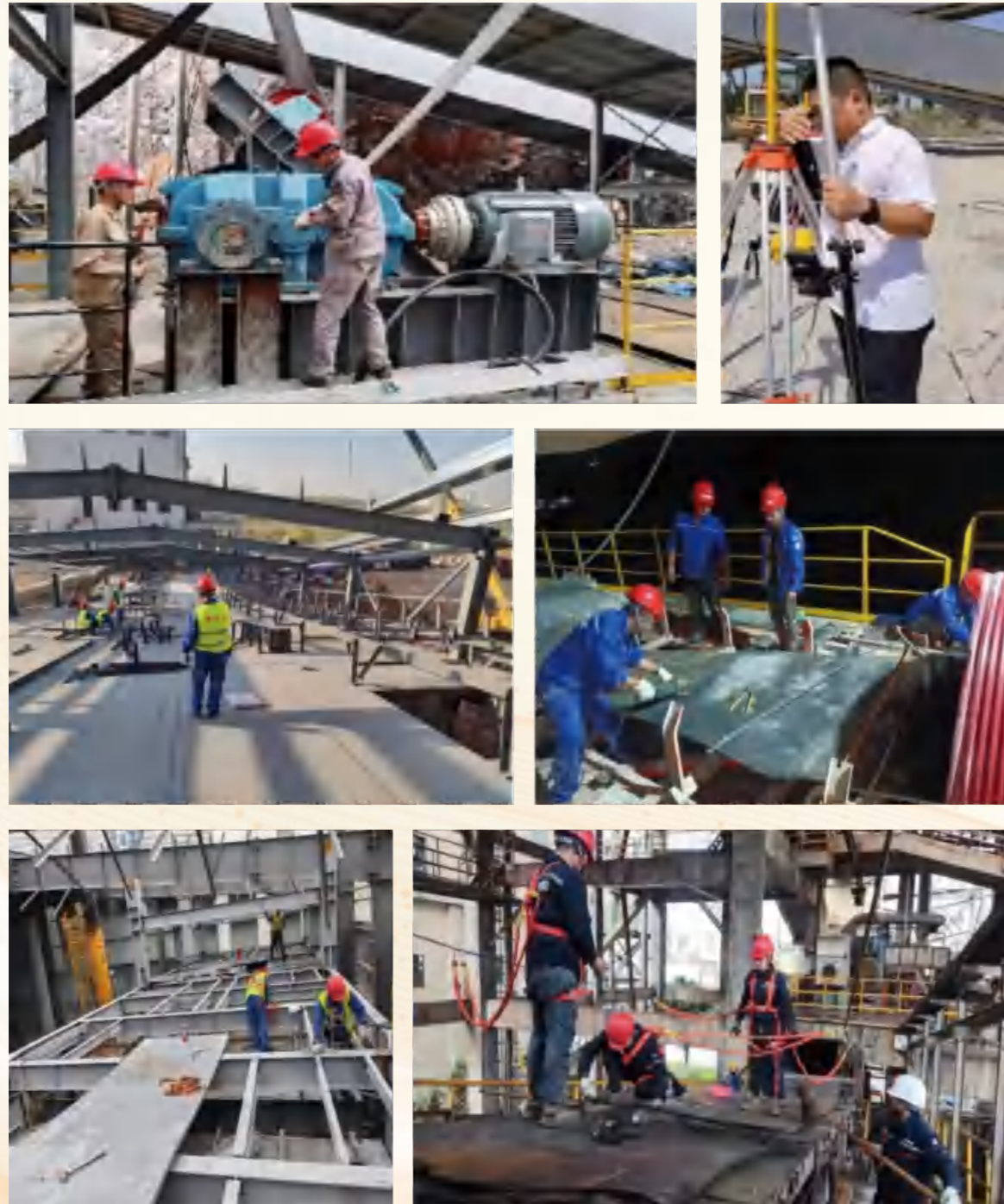


Built-in Idlers



Impact Roller

Installing Service for Project



Project Cases



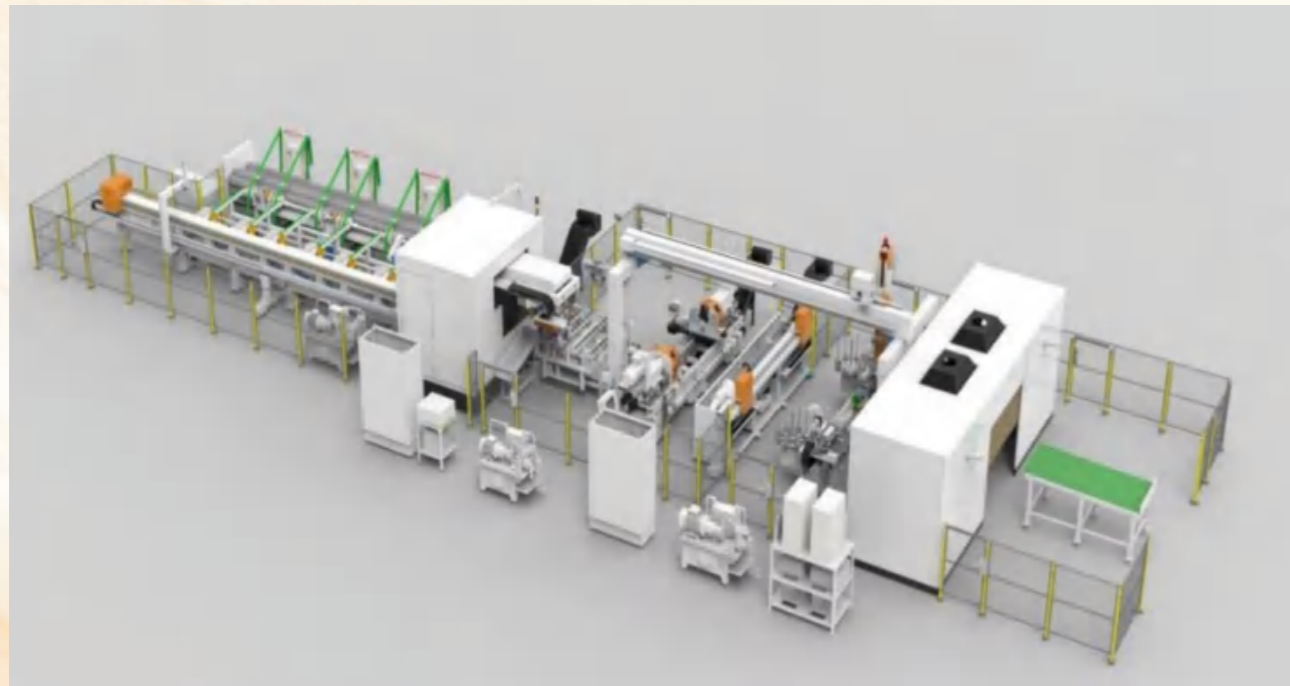
Project Cases



Workshops



Workshops



Workshops





ENTERPRISE QUALIFICATION

Workshops



CORPORATE CULTURE



ENTERPRISE HONORS

工艺质量控制流程图

